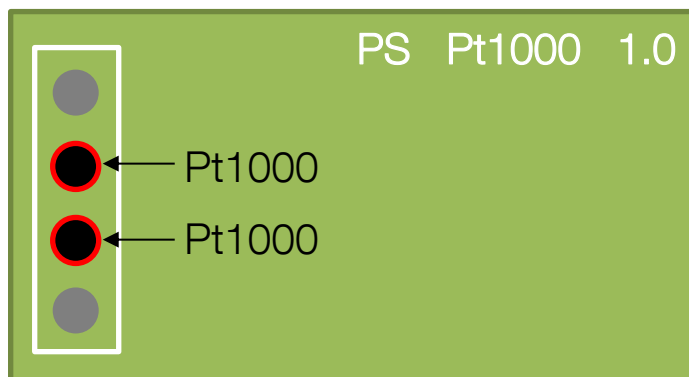


Pt1000 temperature sensor module
for OEM

Description

The interface board for a Pt1000 temperature sensor can be mounted directly on an EmStat3 or EmStat3+ module.

Use the following pins to connect the Pt1000 temperature sensor to:



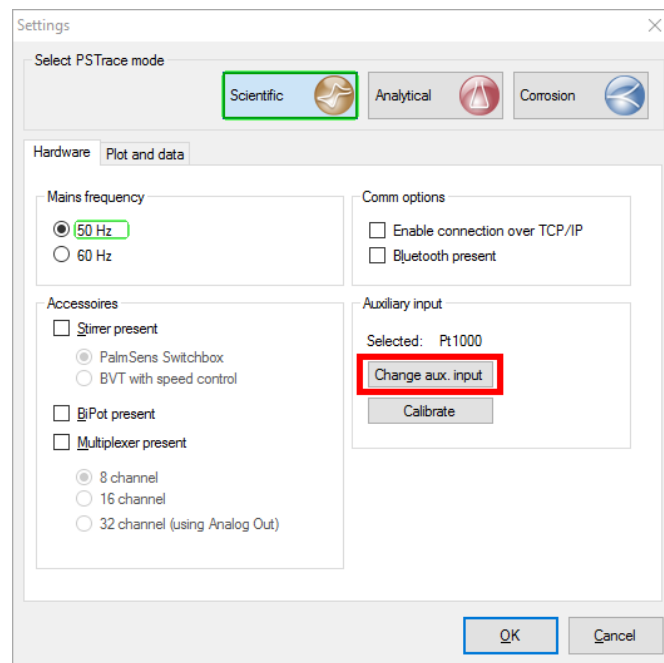
Enable Pt1000 in PSTrace software

If a Pt1000 temperature sensor is connected to the instrument, this should be enabled in the settings window of PSTrace.

Go to menu: Tools → General settings...

Click button 'Change aux. input'

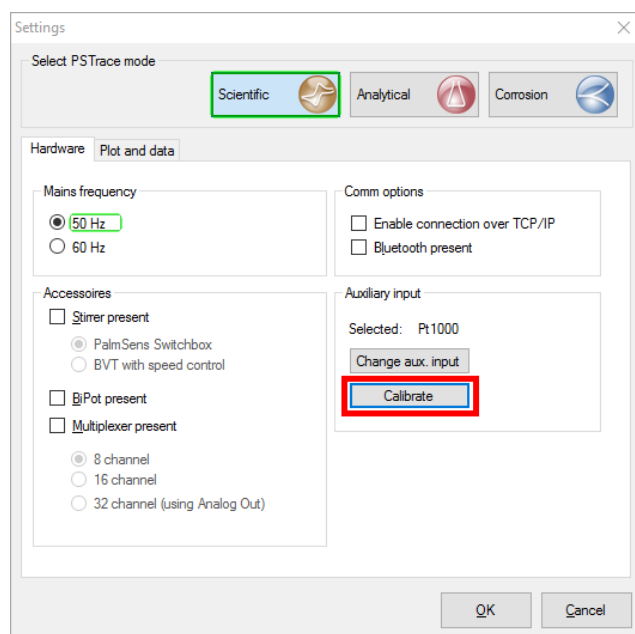
Select Pt1000 as the auxiliary input.



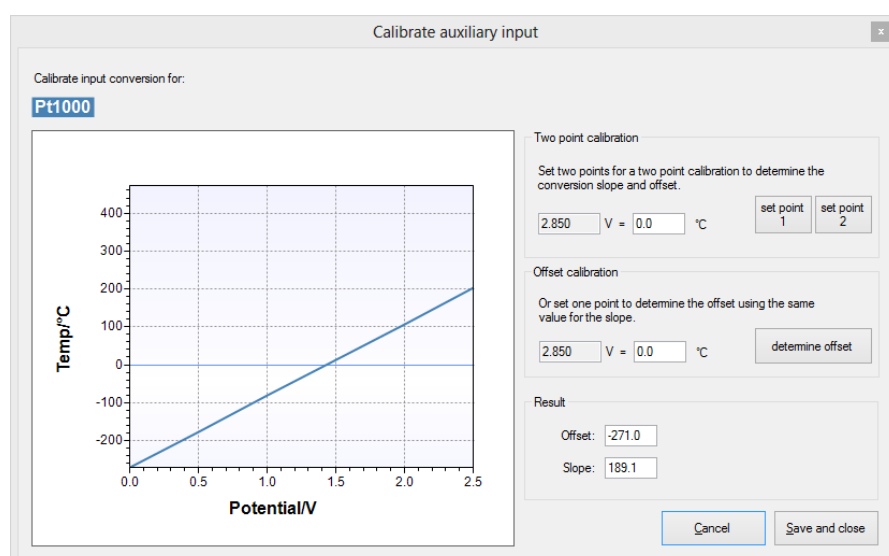
Select Pt1000 as auxiliary input in settings windows

Calibration

Make sure the instrument is connected in PStTrace. Click the 'Calibrate' button in the Settings window.



The 'Calibrate' button is enabled if an instrument is connected



Calibrate the selected auxiliary input

Calibration can be done by setting two points to determine both offset and slope of the linear relation or by just adjusting the offset.

The known actual temperature of the room or liquid the Pt1000 is emerged in can be entered in the field for Offset calibration to determine the offset.

A more precise two point calibration can also be used. In this case a high precision thermometer can be used in a low temperature and high temperature medium to enter two different values, e.g. room temperature and 100 degree Celsius by using the 'set point 1' and 'set point 2' buttons. This will determine both the offset and slope for the linear relation.

Measuring temperature as auxiliary input

Make sure to tick the 'Pt1000' checkbox in the method editor in PSTrace to record the temperature simultaneous with a measurement.

— Post measurement

☐ Cell on after measurement

— Auxiliary measurement

☒ Pt1000*

☐ Record BiPot (WE2)

Please do not hesitate to contact PalmSens for more details:
info@palmsens.com

PalmSens BV
The Netherlands
www.palmsens.com

DISCLAIMER

Changes in specifications and typing errors preserved.
Every effort has been made to ensure the accuracy of this description. However no rights can be claimed by the contents of this description.